



INSTRUCTION BULLETIN

No. 340773
Machine: 800/810
Published: 01-2005
Rev. 00

NOTE: DO NOT DISCARD the Parts List from the Instruction Bulletin. Place the Parts List in the appropriate place in the machine manual for future reference. Retaining the Parts List will make it easier to reorder individual parts and will save the cost of ordering an entire kit.

NOTE: Numbers in parenthesis () are reference numbers for parts listed in Bill of Materials.

Installation instructions for **kit number 9001293**

SYNOPSIS / PROBLEM:

This kit contains the parts needed to install/replace the propel cable rod end on 800/810 sweepers.
Please follow step-by-step instructions.

SPECIAL TOOLS / CONSIDERATIONS: NONE

(Estimated time to complete: 2 hours)

PREPARATION:

1. Park the machine on a clean level surface.
2. Turn off machine, remove key, and set parking brake.

FOR SAFETY: Before leaving or servicing machine, stop on level surface, turn off machine, remove key, and set parking brake.

3. Open the engine cover and side door.
4. Disconnect the battery cables from the batteries.



WARNING: Always disconnect battery cables from machine before working on electrical components.

5. Block the front tires of the machine.

FOR SAFETY: When servicing machine, block machine tires before jacking up machine.

6. Raise the rear of the machine and install jack stands under the frame.

FOR SAFETY: When servicing machine, jack machine up at designated locations only. Hold machine up with jack stands.

NOTE: Refer to Maintenance section in Operation Manual for more information concerning safely jacking up the machine.

INSTALLATION:

NOTE: Do not discard items removed from the machine unless instructed to do so.

NOTE: Refer to Fig. 1 to locate parts removed in Steps 1 through 5.

1. Remove the nut (A) holding the propel cable (B) to the ball joint (C).
2. Remove the ball joint (C) from the propel pump lever (G). Discard the ball joint and the nut (H).
3. Loosen the two jam nuts (D) holding the propel cable (B) to the mount bracket (E). Pull the propel cable out from the slot in the mount bracket and position the propel cable out of the way.
4. Remove the alarm switch (F) from the mount bracket (E).
5. Remove the mount bracket (E) from the accessory pump. Discard the mount bracket.

NOTE: Complete Step 4 only if machine is equipped with a backup alarm switch.

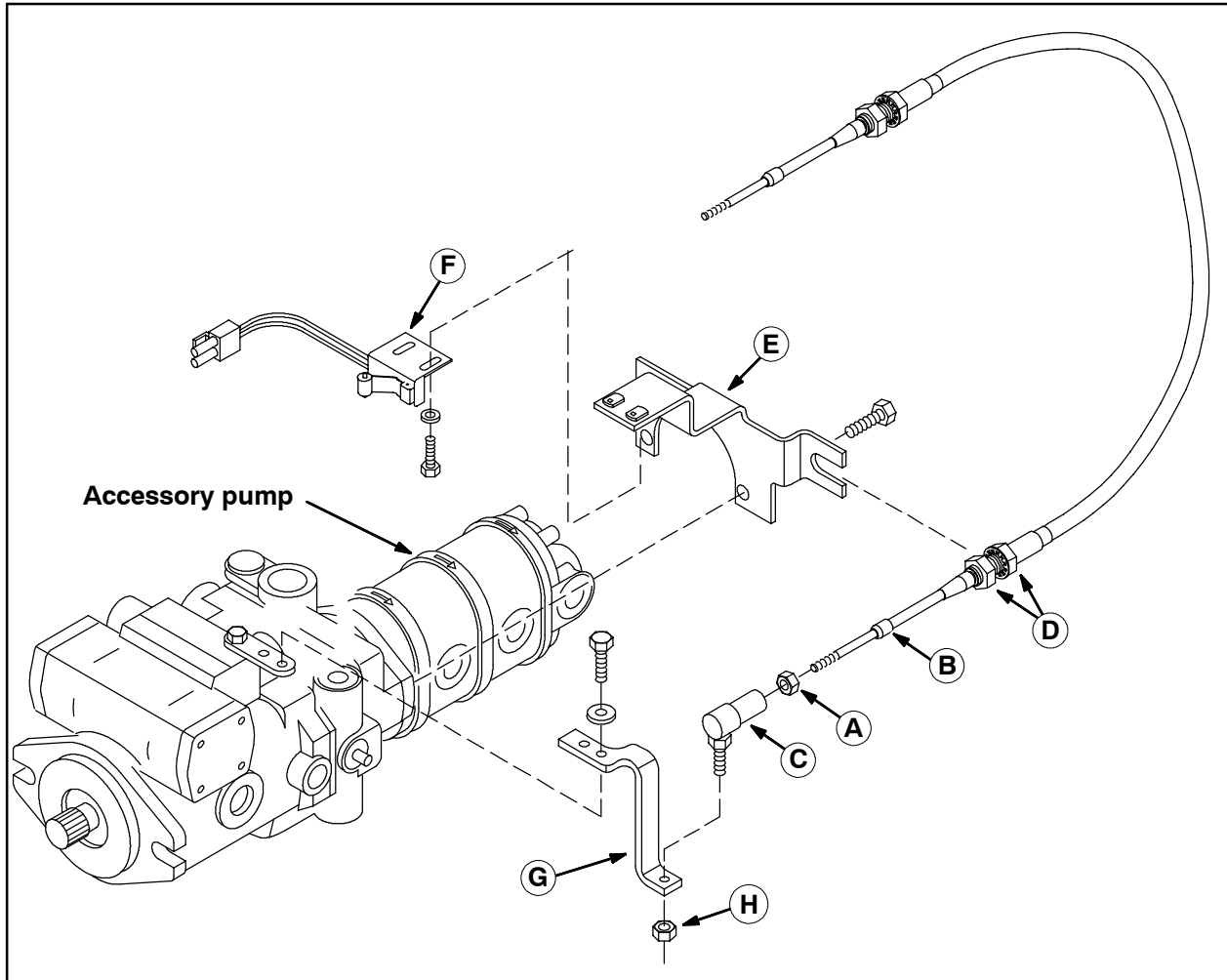


FIG. 1

NOTE: Refer to Fig. 2 to locate parts removed in Steps 6 through 11.

6. Use the previously removed hex nuts (J) to install the new mount bracket (1) onto the accessory pump. Tighten the hex nuts to 15-20 ft lbs.

NOTE: Complete Step 7 only if machine is equipped with a backup alarm switch.

7. Use previously removed hardware (K) to install the alarm switch (L) to the new mount bracket (1).
8. Use a hex screw (3), two flat washers (4), and a hex nut (5) to install the rod end (2) onto the propel pump lever (M).

9. Use the previously removed nut (P) to install the propel cable (Q) onto the rod end (2).
10. Insert the propel cable (Q) into the slot in the new bracket (1) and tighten both jam nuts (N).
11. Use previously removed hardware (K) to install the alarm switch (L) to the new mount bracket (1).
12. Remove the jack stands from under the machine and lower the machine to the floor.
13. Reattach the battery cables to the batteries.
14. Start machine and check rear tire for movement. Adjust centering if necessary.

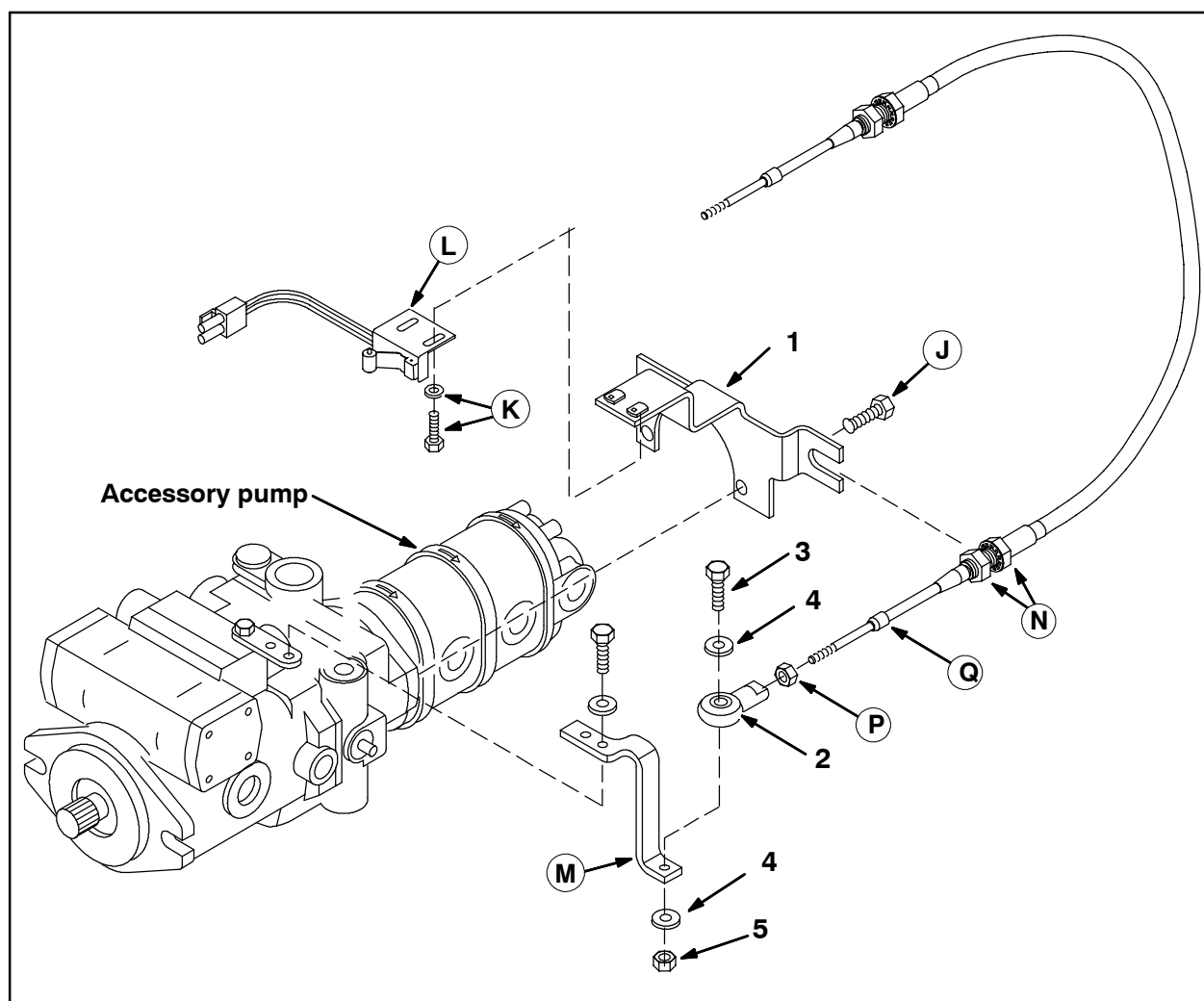


FIG. 2

Bill of Materials for Replmt Kit, Mtg Bracket, Cable-9001293

| | Ref. | Tennant Part No. | Description | Qty. |
|---|-------------|-----------------------------|--------------------------------------|-------------|
| ▽ | | 9001293 | Replmt Kit, Mtg Bracket, Cable | 1 |
| ▲ | 1 | 1020982 | Bracket, Mtg, Propel Cable | 1 |
| ▲ | 2 | 68866 | Rod-End, .25-28RH Fem 0.25B [Teflon] | 1 |
| ▲ | 3 | 25046 | Screw, Hex, .25-20 X 1.00, 5 | 1 |
| ▲ | 4 | 32490 | Washer, Flat, 0.25 Std | 2 |
| ▲ | 5 | 41169 | Nut, Hex, Lock, .25-20, NL, SS | 1 |

TENNANT COMPANY
P. O. Box 1452
Minneapolis, MN 55440-1452